



Call from the UK
0800 433 4833

IsoWindow Adhesive Tapes page 1 of 2

F1 • F11 • F12 • F22 Roll width mm: 50/75/100/150 • Roll Length m: 25/50 • Carton content varies

ONE WAY TAPE APPLICATION Interior & Exterior



One-Way Tape is installed to the face of the existing frame or after the frame has been installed. The tape is covered via a plywood lining, plastered in or covered with the installation of a plasterboard/insulated reveal. The adhesive strips appear on one side of the tape.

TWO WAY TAPE APPLICATION Interior & Exterior



Two-Way Tape is installed to the side of the frame prior to the frame being installed. This option allows you to have the full width of the window frame visible. The adhesive strips appear on both the front and back of the tape.

PROPERTIES

Material	Interior: PP Fleece & alu coating	Exterior: PP fleece
Weight	140g/m ²	
Roll Width mm	50 75 100 150	
Roll Length m	25/50 25/50 25/50 25/50	
Rolls/Carton	7 5 3 2	
Thickness	.06mm	
Tear-Resistance	Interior: Longitudinal: 305 N/5cm Lateral: 201 N/5cm	Exterior: Longitudinal: 290 N/5cm Lateral: 235 N/5cm
Elongation	Interior: Long: 84% Lat: 65%	Exterior: Long: 80% Lat: 65%
Fire Performance	B2/E	
Resistance to Ageing	10 years	
UV-Stability	2 months	
Storage	Min. 12 months. Warm and dry (+10°C to +25°C)	
Working Temperature	-5°C to +40°C*	
Temperature Resistance	40°C to +80°C (short-term +100°C)	
Sd-Value	Interior: Approx. 40m	Exterior: Approx. 0.02m

*Surface condensation can occur at temperatures below +5° and will reduce the strength of the adhesive.

BENEFITS/USAGE

Interior Tape

- Strong adhesion of the adhesive acrylic strip on all types of window frame & various substrates such as OSB, wood, vapour barriers
- Tear-resistant & robust
- **Can be plastered over & painted over**
- Compatible with acrylic glass & poly carbonate

Exterior Tape

- Strong adhesion of the mounting strip to all kinds of window frames
- **Can be plastered over & painted over**
- Compatible with acrylic glass & poly carbonate
- Resistant to the penetration of rain (water column >200cm)
- Tear-resistant, robust & diffusion open

PREPARATION

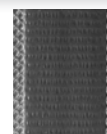
Please observe the guidelines for application of IsoWindow window tapes. For F12 on very porous and highly absorbent substrates such as concrete, plaster, uncoated steel, untreated wood, we recommend priming with [Uni Primer](#) or [Bubi LF Bonding Primer](#).

APPLICATION

The side of the tape that is covered with fleece can be plastered over with standard materials or painted over with dispersion coating.



ACRYLIC ADHESIVE STRIP



BUTYL ADHESIVE STRIP



INTERIOR: CREAM FLEECE BACKING



EXTERIOR: BLACK FLEECE BACKING



Austrian Innovation
at work in the UK

UNITED KINGDOM

0800 433 4833
0044 75 654 294 28
020 8123 3305
info@isocelluk.co.uk
www.isocelluk.co.uk



Austrian Innovation
at work in Ireland

IRELAND

00353 (0) 86 601 8555
info@isocell.ie
www.isocell.ie

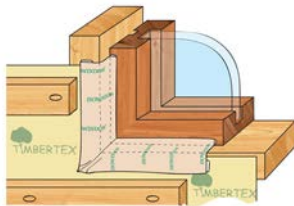


IsoWindow Adhesive Tapes page 2 of 2

F1 • F11 • F12 • F22 Roll width mm: 50/75/100/150 • Roll Length m: 25/50 • Carton content varies

Timber Frame One-Way Tapes

INTERIOR



ONE-WAY TAPE USE



IsoWindow F11

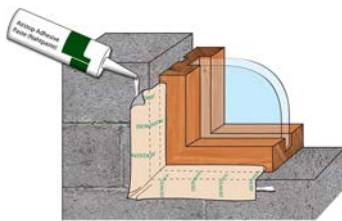
Two Acrylic adhesive strips. **Use on** Airtight and vapour barriers (interior and exterior), timber reveal, OSB, plywood & timber sheeting.

EXTERIOR



Block work One-Way Tapes

INTERIOR



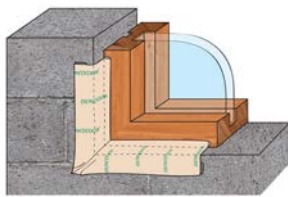
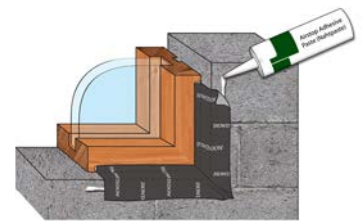
ONE-WAY TAPE USE



IsoWindow F1

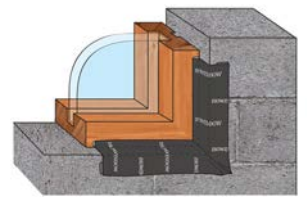
One Acrylic adhesive strip. **Use with** Airstop Sealant 'Sprint' and Airstop Adhesive Paste (Nahtpaste). **Use on** Airtight and vapour barriers (interior and exterior), timber reveal, OSB, plywood & timber sheeting, block, brick and concrete.

EXTERIOR



IsoWindow F12

One Acrylic adhesive strip and one Butyl Adhesive Strip. **Use with** Uni Primer or Bubi LF Bonding Primer. **Use on** timber reveal, OSB, plywood & timber sheeting, block, brick and concrete.



IsoWindow F22

Two Butyl Adhesive Strips

Please contact us directly for more information on Two-way tapes.