

VW T5/T6 CURTAIN SET

Fitting Instructions

(for windows 5,6,7,8,9,10-11)

Thank you for your purchase; we want you to get the best results when using our products, so please be sure to read these instructions before attempting the installation of the curtain set. Although this kit is easy to install, it does require some basic DIY skills.

Tools required:

- Phillips screwdriver
- Electric drill
- 2.5mm drill bit
- Small piece of ply or similar (fig. 9)
- Masking tape
- Long Nosed Pliers

For each window, you will need the following items:

- Top track (x1)
- Bottom track (x1)
- Moulded track end stops (x4)
- Screws
- Poppers (x4)
- Curtains (x2 for Side and Tailgate) - (x1 for each Barn Door)
- Tie backs (x1 for each curtain)

Before you start please select the correct curtains and track for each window. Each piece of track is labelled for easy selection.

1. Select the track to install and push the moulded track end stops into place at both ends.

Side Windows

Position the pre-formed track for best fit. Don't put the track too far back or the curtains will rub against the window or opening slider if you have one. (fig.1 & 2)

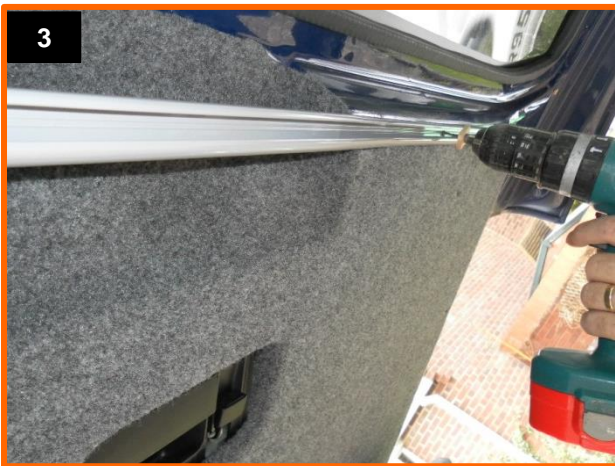


1

Note: Whilst every effort has been made to ensure these instructions are as accurate and clear as possible, we cannot be held responsible for misinterpretation or any subsequent accident or damage caused through mis-fitted parts.

Tailgate Set

The bottom track should be fitted flat to the face of the door usually above the ply panel. (fig.3 & 4) This track will fit around the wiper motor if you have one. (Please note that the bend is offset from the middle to match the location of the wiper housing)



The top track must be fitted so the holes are drilled upwards (if the tailgate is closed) to avoid damage. (fig.5 & 6 shows tailgate open)



Barn Door Set

The track will need to be pushed into the curved profile of the window for best fit. (fig.7 & 8)



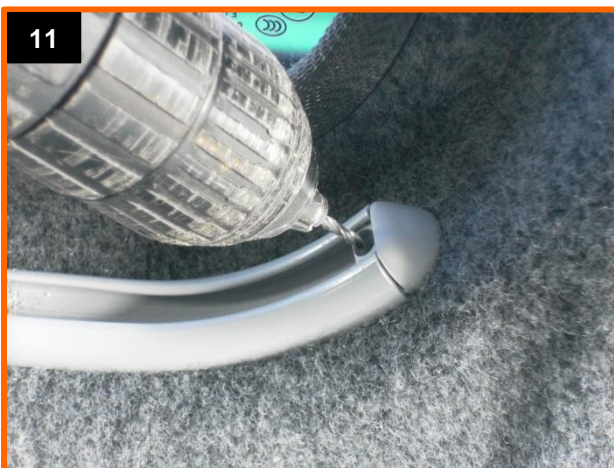
2. Start by using one of the pre-drilled holes in the track as a guide, drill a hole into the window surround and screw the track into place. (fig.9 & 10)

Note: Whilst every effort has been made to ensure these instructions are as accurate and clear as possible, we cannot be held responsible for misinterpretation or any subsequent accident or damage caused through mis-fitted parts.

TIP: Cut a small piece of wood or ply and drill through the centre. Leave the wood in place on the drill bit to prevent any damage to the track when drilling.



3. Ensure the track is positioned correctly, drill the rest of the holes and screw into place.
4. Drill through the moulded track end stops and screw into place. (fig.11 & 12)



5. Repeat for the opposite track. You are now ready to install the curtains.
6. Please be sure to select the correct curtains from the set and decide whether you want the black or grey to the inside.

Side Windows - (1 pair)

These curtains have 2 poppers on one side.

Tailgate Set - (1 pair)

The curtains for the tailgate set have 2 poppers on one side and should be labelled. (they are taller than the side curtains)

Barn Door Set - (1 for each door)

These curtains have 4 poppers, 2 on each side.

7. Starting at the top, hold the first plastic curtain slider, insert into the track and twist 90° into place. Insert the remaining sliders and repeat for the bottom track. (fig.13,14,15 & 16)

TIP: You may find it easier to use a pair of pliers to assist with turning the sliders

Note: Whilst every effort has been made to ensure these instructions are as accurate and clear as possible, we cannot be held responsible for misinterpretation or any subsequent accident or damage caused through mis-fitted parts.



8. Once both curtains are installed, position the curtains to each side of the window. You can now mark the position of the poppers, drill and screw them into place. (fig.17,18,19 & 20)

TIP: Use a piece of masking tape and a pen to mark the position of the poppers. The tape will help prevent damage to paintwork whilst drilling.





9. Pop the curtains onto the poppers and fit the tie backs.

That's it you're done!

TIP: If the curtain sliders begin to stick, simply apply some petroleum jelly (Vaseline) in the track, this helps for extra smooth operation.



IF YOU ARE UNSURE OR NEED ANY ADVICE, PLEASE CONTACT US

Note: Whilst every effort has been made to ensure these instructions are as accurate and clear as possible, we cannot be held responsible for misinterpretation or any subsequent accident or damage caused through mis-fitted parts.