

## DROP SEALS

# LAS8006 si

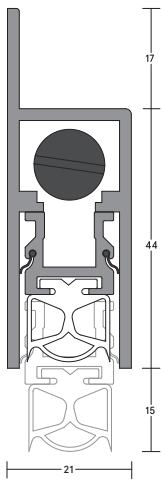
HEAVY DUTY **30dB**

A heavy duty, face-fixed or semi-mortised automatic drop seal. It features a high efficiency mechanism, which lifts the seal clear of the floor as soon as the door is opened by a few millimetres; resulting in lower door operating forces. Requires no power connection. Self-levelling on uneven floors; seal height can be adjusted independently of fixing screws.

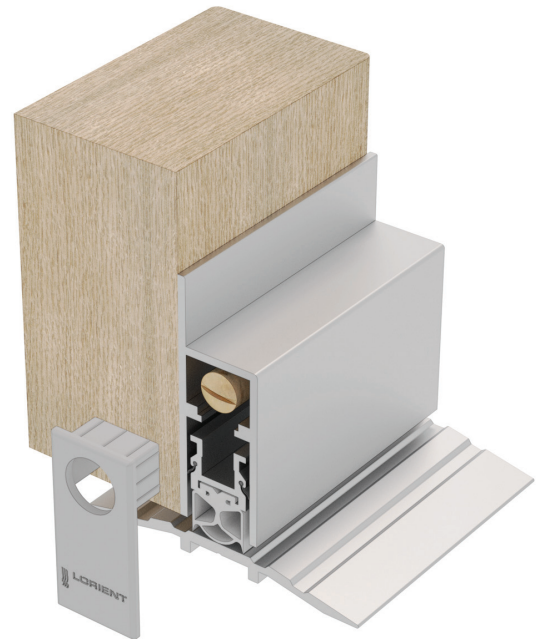


ID No.  
290

DROP SEALS



LAS8006 si



LAS8006 si (shown with LAS4010)

## SYSTEM SPECIFICATIONS

### Test evidence

- ▶ Acoustic: BS EN ISO 10140-2: 2010 (up to Rw 30dB).
- ▶ Smoke: BS 476-31.1: 1983.
- ▶ Durability: 1 million cycles.

### Performance

- ▶ Meets smoke requirement: BS 9999: 2017.
- ▶ Suitable for use on timber fire doors.
- ▶ Protects against sound, smoke, fire, draught, light and insects.
- ▶ Suitable for wheeled traffic.

### Location

- ▶ Single swing, single and double leaf doors.
- ▶ For use on both right and left handed doors.

### Use with

- ▶ Any perimeter seal. Any threshold plate.

### Min/max gap size

- ▶ 1mm/15mm.

### Seal material

- ▶ Black or grey silicone rubber.

### Standard lengths

- ▶ 335mm, 435mm, 535mm, 635mm, 735mm, 835mm, 935mm, 1035mm, 1135mm and 1235mm.
- ▶ Note: Each length can be cut back to the next size down. The 335mm can be cut back to 275mm.

### Fixing

- ▶ Fixing screws are supplied, holes should be drilled at time of fixing.

### Adjustment

- ▶ Self-levelling on uneven surfaces – can be adjusted independently of the fixing screws.

### Finishes

- ▶ Silver anodised aluminium with grey end caps and grey silicone rubber gasket.
- ▶ Bronze anodised aluminium with black end caps and black silicone rubber gasket.
- ▶ Black and light bronze anodised aluminium (non-standard – charges and lead times apply).
- ▶ Other powder-coated colour finishes (non-standard – charges and lead times apply).

### Accreditation



(R27972)