

Passive Fire Protection

Fire Protection for Construction Movement
Joints, Gaps & Service Penetrations





Intelligent Engineered Passive Fire Protection

We are specialists, with one focus that has not and will not change – to protect people and buildings from fire. For over 40 years, Nullifire has been a market leader in intumescent and fire stopping solutions.

Passive fire protection is highly complex but crucially important, especially as buildings become more sophisticated. At Nullifire, we understand the need to have confidence in fire protection; so, we provide systems that perform when they are called upon.

With a unique team of technical experts, everything is focused on providing what our customers need at every stage of their project – smart protection.

Nullifire is a brand of CPG Europe, a European manufacturer and service provider of high performance building materials.

Contents

- 3 Introduction
- 4 About Us
- 6 Complete Smart Solutions

Product Information

- 8 Wall & Floor Penetration Sealing
- 10 Pipe & Cable Penetration Closing
- 14 Specialist Sealants & Movement Gap Seals
- 16 Linear Movement & Specialist Building Gap Seals
- 20 Large Cavity Barriers

About tremco illbruck

- 22 Certification and Testing
- 23 CPG UK and its trusted brands

Assistance When Required

Our targeted approach allows you to access answers to all of your questions - quickly, simply and for every phase of your project.

Regardless of the complexity of a project, you can turn to the team here at Nullifire. Our trained expert team support architects, specifiers, main contractors and installers in product selection, specification writing and industry best practices. Involving us at the early stages of a project can help you save money and time, as well as the assurance that the products selected are fully compatible and ideal for the job at hand.

Whilst choosing the right product is vitally important, the application is equally as critical. Our extensive range of training ensures Nullifire products are applied professionally and efficiently, whilst giving installers and contractors access to new technologies and solutions.

All of our product data-sheets, technical notes and additional product information can be downloaded from www.nullifire.com

About Us

Introduction

We are specialists, with one focus that has not and will not change – to protect people and buildings from fire. Passive fire protection is highly complex but crucially important, especially as buildings become more sophisticated. We understand the need to have confidence in fire protection so, we provide integrated systems that perform when they are called upon.

Alongside our market leading Nullifire intumescent coatings for the protection of steel structures, fire stopping products provide outstanding passive fire protection solutions to

service penetrations, movement joints and linear gaps along with unique interfacing solutions.

With a knowledgeable team of technical experts, everything is focused on providing what our customers need at every stage of their project – smart protection.

Passive Fire Protection Solutions

Technical Hub

Our service offer underpins our product range, providing customers with a fast track response to

technical queries at any stage of the design, build and installation process. One central phone number ensures the relevant technical support team is reached with the minimum delay, advising on product specification, application and installation.

Early input at every stage of the construction process can facilitate the seamless integration of passive fire protection solutions and prevent unnecessary disruption or delays to the build programme. This ensures accurate specification of products for every circumstance. Our extensive knowledge of the discipline allows us to advise on current and



Technical
Hub:
01942 251 400



Canary Wharf, London

likely future legislation related to fire protection in order to future-proof construction developments.

Working with Contractors

We can work closely with contractors to optimise the installation process. Data on formulations, installation specifications and technical drawings can be supplied to field teams to ensure the correct application of our products. Bespoke manuals and instructions can be prepared by our technical teams for specific situations.

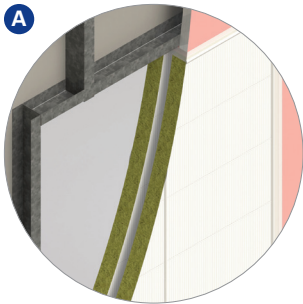
On-site Support

We provide on-site support and classroom-based training to give installers working knowledge of passive fire protection solutions and instruction in the correct application and installation of our full range of products. Comprehensive searchable product information such as technical data

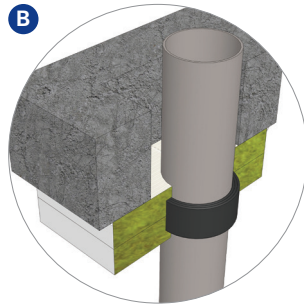


Complete Smart Solutions

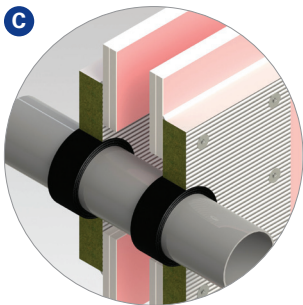
Nullfire manufactures a comprehensive range of fire stopping and fire resistant products that cover an extremely wide range of construction applications.



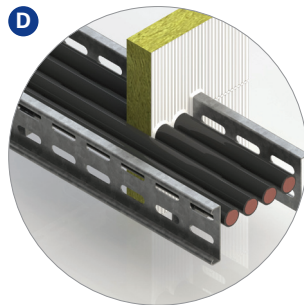
Penetration Openings Through Compartment Walls (Flexible or Non-Flexible Construction)



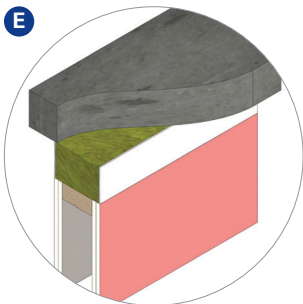
Penetration Openings in Floors (Concrete, Timber or Membrane Construction)



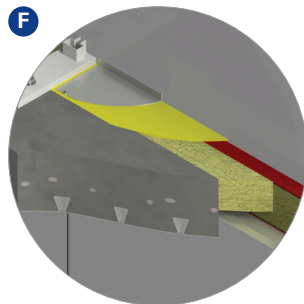
Combustible Penetration Services



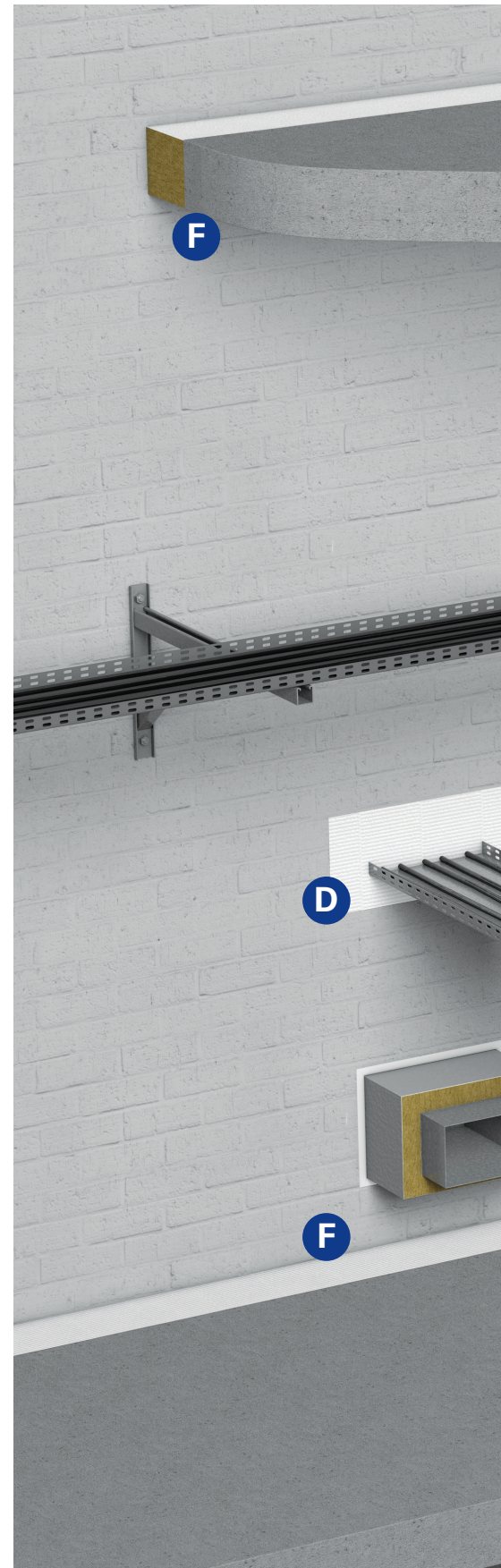
Non-Combustible Penetration Services and cable Management Systems

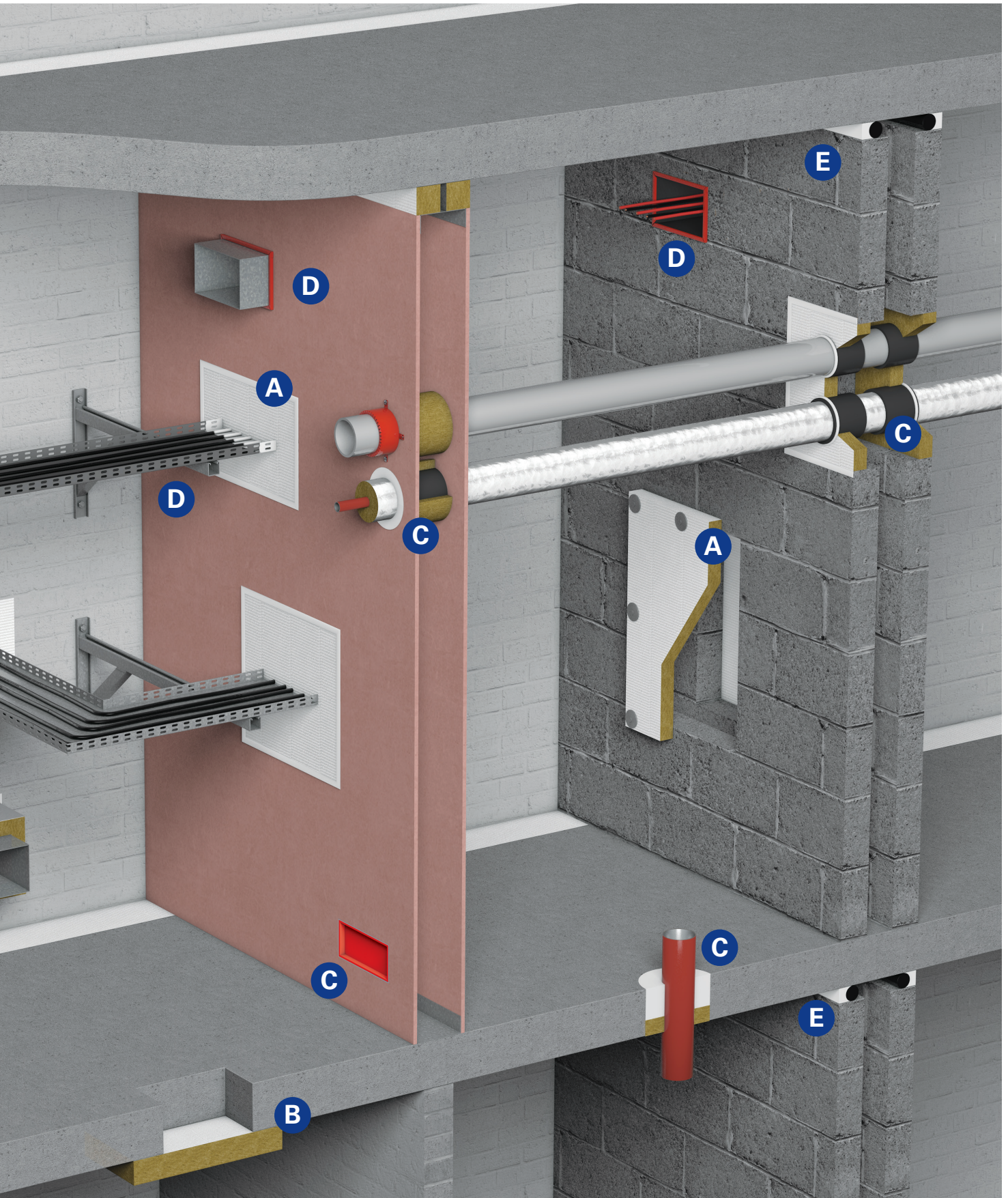


Linear Seals, Movement Heads and Deflection Details



Slab Edge Cladding and External Façade Solutions





Wall & Floor Penetration Sealing



ETA 17/0392



APPROVAL N° CF5343

FB750 Intubatt Coated Batt

up to
240
mins

Rock mineral fibre board with an ablative elastomeric coating

Description

FB750 Intubatt is a lightweight 4 hour fire barrier comprising of a rock mineral fibre board with a uniquely identifiable ablative coating, containing Optifire™ technology. Designed to reinstate the fire performance of compartment walls and floors which have been breached by penetrating services, providing a fire, smoke, thermal, acoustic and air pressure seal. FB750 must be used in conjunction with FS702 Intumastic to be suitable for sealing around the following service types: non-combustible pipes, cable trays, ladders and baskets (perforated or non-perforated), combustible pipes with suitable closing device, armoured cables, data cables, HV cables and cable bundles up to 100mm.

Features & Benefits

- Up to 4 hours fire resistance- tested to EN1366-3 (up to 2.16m² opening) and to BS 476 Pt20/22 tested (up to 7.2m² opening with framework)
- Optifire™ unique traceability identifier
- Acoustic sealing & smoke sealing
- Air pressure tested up to 2000 Pa

Specification

1200 x 600 x 50 mm
Tolerances: ±2.5%
140 kg/m³
Supplied individually in clearly marked bags (180kg option available)



ETA 17/0582



APPROVAL N° CF5378

FR230 Intucompound Fire Mortar

up to
240
mins

Gypsum based mortar used to reinstate the fire resistance performance of floor constructions where the compartment line has been breached by service penetrations

Applications

FR230 provides a safe working platform for loads upto 2.5 kg/m² when installed in full accordance to our recommendations. FR230 is used to stop the spread of fire and smoke around services that pass through compartment walls and floors, whilst providing an unsupported load bearing capacity (see Specification Information). The system also provides thermal, acoustic and air sealing performance. FR230 is suitable for the following service penetrations; single and bunched cables, cable trays, cable ladders, trunking**, non-combustible pipes, ducting/damper penetrations* and combustible pipes**.

Features & Benefits

- Provides an effective barrier to the spread of smoke and fire
- Fire resistance up to 240 minutes
- Certified to EN 1366-3:2009
- Rapid setting, zero shrinkage formulation- can be used as pourable or trowel grade

* Damper manufacturer should be consulted prior to application

** A suitable closer device will be required

Specification

Supplied in 20 kg bags
Mix Ratio: 2:1 powder to clean water (a stiffer mix may be required to aid application)
Coverage: 3.5 bags per m² at 100 mm depth
Maximum load capable unsupported opening: 1.21 m² at 100 mm



FS702

Intumastic Fire Resistant Acrylic



A water-based acrylic sealant which cures to give a firm but flexible fire seal. Used to repair damage or bond to FB750 Intubatt

Description

FS702 Intumastic is suitable for use in various construction joints offering up to 30% movement capability whilst providing an excellent acoustic and air seal. FS702 is suited for use around non-combustible services, cables, rock fibre insulated non-combustible pipes, using a minimum depth of 25mm. FS702 has excellent adhesive qualities and can be used for bonding and pointing of joints and service penetrations in conjunction with FB750 Intubatt systems.



Features & Benefits

- Up to 4 hours fire resistance - tested to EN1366-4, EN1366-3 and BS 476 Pt 20-22.
- Suitable for flexible walls and rigid walls & floors.
- Acoustics up to 55dB and air seal up to 2,000 Pa
- Optifire™ unique traceability identifier

Specification

Gun Grade:
310ml cartridges (12 per box/25 per box)
600ml sausages (12 per box)
Brush Grade: 5 Litre Can
Trowel Grade: 5 Litre Bucket
Colour: White (Grey available on request)
Can be over-painted



Pipe & Cable Penetration Closing



F1025 Intuflex Insulation Wrap

up to
240
mins

Designed to reinstate the fire insulation of services to the requirement of the compartment line in terms of EI

Description

F1025 Intuflex is a fire insulation upgrade material, primarily made from rock mineral fibre, with an outer layer of foil to provide a class O surface spread of flame around a class A1 core. F1025 is designed to upgrade the insulation rating of uninsulated penetrated services (where required) which have been sealed using a Nullifire product. Tested around copper and steel pipes up to 160mm diameter, cable trays, ladders and baskets, individual cables and cable bundles up to 100mm diameter.

Features & Benefits

- Tested to EN 1366-3 with copper pipes, steel pipes, cabl trays/ladders/baskets, individual cables and cable bundles
- Reinstates the insulation requirements of the compartment when applied around uninsulated service penetrations
- Easy and fast installation
- Does not de-rate electrical cables-

Specification

25mm x 200mm x 10m
Tolerances: ±2.5mm
Density: 45 kg/m³
Supplied in individual boxes



FO100 Putty Pad

up to
120
mins

Provides fire protection for dry wall socket boxes

Description

FO100 Putty Pad is designed to reinstate the fire integrity, of masonry walls and drywalls when penetrated by an electrical backing box, eliminating the requirement for a baffle box. This product has also been approved to maintain the acoustic performance of the substrate in accordance with 'Approved Document E' Robust Details, and is fully tested to meet the air leakage requirements of 'Approved Document L' providing a hermetic seal.

Features & Benefits

- Tested in accordance with EN 1366-3 up to 2 hours
Classification EN 13501:2007
- Provides an effective barrier to the spread of smoke and fire for up to 2 hours
- Reinstates the acoustic integrity of a 65 dB partition (four boxes, two back to back)
- Quick and easy to install- no need for expensive baffle boxes

Specification

| Size (mm) | To Fit |
|---------------|---------------|
| 170 x 170 x 4 | single socket |
| 230 x 170 x 4 | twin socket |



FP170

Intucollar Intumescent Pipe Collar



Used to seal combustible pipes as they pass through fire compartment walls and floors

Description

FP170 Intucollar comprises of a stainless steel and a reactive intumescent lining. FP170 expands when exposed to fire, reinstating the fire performance of compartment walls and floors which have been penetrated by combustible pipes. FP170 can be used on flexible walls & rigid walls (100mm or wider) and rigid floors (150mm or wider). FP170 may additionally be used around insulated combustible pipes or continuously insulated non-combustible pipes.

Features & Benefits

- Up to 4 hours fire resistance - Tested to BS EN 1366-3
- Suitable on flexible & rigid walls, rigid floors
- Easy to install
- Water resistant
- Stainless steel shell

Specification

Available Sizes:
40,55,65,75,82,90,
100-110,125,140,160,200,250,315 and
400mm
Colour: stainless steel



ETA 17/0136



APPROVAL N° CF703



FP220

Service Sleeves



A practical solution for fire sealing combustible pipes and ducting

Description

A 140 to 300 mm (dependent on requirement) deep steel sleeve that is positioned around combustible pipes to provide up to 4 hours fire protection. Designed specifically to provide a low cost solution for fire sealing combustible pipe penetrations as they pass through fire compartment walls and floors, whilst completely protecting the cavity within stud work walls. In a fire, the intumescent lining within the metal sleeve expands and crushes the heat softened plastic pipe leaving a potential path for fire completely sealed. Intusleeve is a perfect solution for angled pipes.

Features & Benefits

- Ultra-slim body design ensures easy installation in awkward situations and less obtrusive than externally fitted fire collars
- Fully tested at Exova BMTRADA to 2 hours integrity and insulation walls. 4 hours integrity and insulation when used within Intucolumn floor seals

Specification

Circular, diameters: 55 mm, 82 mm, 90 mm, 110 mm, 160 mm & 200 mm.
Standard length: 140 mm. Length may be increased to suit angled pipe requirements.
Colour: red



ETA 17/0391



APPROVAL N° CF5363

Pipe & Cable Penetration Closing



FP300

Intumescent Pipe Wrap



A simple to use self-adhesive intumescent pipe wrap used for sealing plastic and composite pipe penetrations

Description

FP300 is used to stop the spread of smoke and fire along services that pass through compartment walls and floors. The wrap fits around the circumference of the pipe within the depth of the substrate. In the event of a fire FP300 prevents the passage of fire and smoke by closing off the aperture within the compartment floor or wall when penetrated by plastic pipes. FP300 is suitable for use with all common plastic and composite pipes (PVC, ABS, PE, PP, PB). Typical areas of use include health and leisure facilities, schools, universities, commercial, retail and industrial buildings.

Features & Benefits

- Certified to the latest British and European standards EN 1366-3 and EN 13501: Pt 2
- Provides an effective barrier to the spread of smoke and fire for up to 2 hours
- Ready to use, and easy to install. No mechanical fixing required
- Can be utilised internally within FB750 Coated Board System

| Specification | | | |
|----------------|-----------------|------------------|---------------------|
| Pipe Size (mm) | Wrap Width (mm) | Wrap Length (mm) | Wrap Thickness (mm) |
| 55 | 60 | 183 | 3.5 |
| 82 | 60 | 274 | 3.5 |
| 110 | 60 | 368 | 6 |
| 160 | 60 | 559 | 9.5 |



FP302

Intustrap Intumescent Strap



A graphite impregnated intumescent product with high flexibility

Description

FP302 is designed to close off combustible elements whilst maintaining compartmentation.

FP302 is also a component product incorporated within many Nullifire fire stopping products.

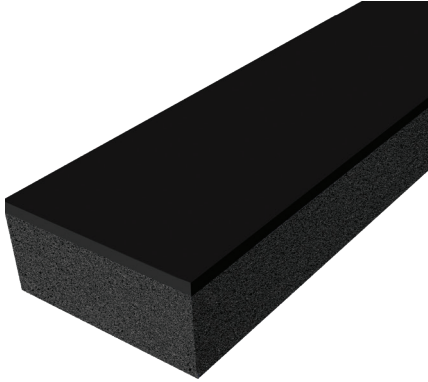
This product is most commonly used around combustible pipes with a diameter of between 10 mm and 160 mm and all types of pipe insulation up to 60 mm thick.

Features & Benefits

- Tested to BS EN 1366-3
- Unaffected by moisture
- Fully tested for up to 240 minutes integrity and insulation (dependent on application)
- Available in easy to handle rolls
- Simply link with duct tape

| Specification |
|--|
| Packaged: 60 mm x 4 mm x 25 m roll 1 per box |





FP333

Trunking Infill



Provides a fire-tight barrier for trunking boxes where frequent changes to cabling may be required

Description

FP333 Trunking Infill is a fire resistant compressible foam strip layered with high expansion intumescent material produced in three sizes. FP333 is designed to provide a permanent fire barrier within trunking boxes passing through fire compartment walls.

Features & Benefits

- Up to 2 hours fire performance - Tested to BS EN 1366-3
- Integrity, insulation and smoke seal
- Zero fibre migration
- Three standard sizes to allow for complicated service conditions

Available Sizes

29mm x 47mm x 333mm
29mm x 97mm x 333mm
29mm x 147mm x 333mm
to suit 50/100/150 mm trunking box widths.

All available in individual units



Specialist Sealants Linear & Movement Seals



ETA 14/0355



APPROVAL N° CF5347

FS702

Intumastic Fire Resistant Acrylic



A water-based acrylic sealant which cures to give a firm but flexible fire seal. Used to repair damage or bond to FB750 Intubatt

Description

FS702 Intumastic is suitable for use in various construction joints offering up to 30% movement capability whilst providing an excellent acoustic and air seal. FS702 is suited for use around non-combustible services, cables, rock fibre insulated non-combustible pipes, using a minimum depth of 25mm. FS702 has excellent adhesive qualities and can be used for bonding and pointing of joints and service penetrations in conjunction with FB750 Intubatt systems.

Features & Benefits

- Up to 4 hours fire resistance - tested to EN1366-4, EN1366-3 and BS 476 Pt 20-22.
- Suitable for flexible walls and rigid walls & floors.
- Acoustics up to 55dB and air seal up to 2,000 Pa
- Optifire™ unique traceability identifier

Specification

Gun Grade:
310ml cartridges (12 per box/25 per box)
600ml sausages (12 per box)
Brush Grade: 5 Litre Can
Trowel Grade: 5 Litre Bucket
Colour: White (Grey available on request)
Can be over-painted

FS703

Fire Resistant Silicone Sealant



Ideal for sealing movement joints where a fire rating is required

Description

FS703 is a low modulus, neutral cure, silicone sealant, suitable for linear gaps sealing in order to reinstate the fire performance in compartment walls and floors. Suitable for fire seal joints in compartment walls and floors, static linear joints (masonry to masonry/rigid wall/rigid floor/flexible wall) and window & door joints (masonry to timber/steel)

Features & Benefits

- Up to 4 hours fire resistance, tested to EN 1366-4
- Tested in gaps 10-220mm
- Ideal for joints in flexible walls, rigid walls & floor, windows & door frames
- Airtight up to 6000 Pa
- Superior elasticity
- Excellent tooling properties
- UV & weather resistance

Specification

Colours:
White (Grey & Black available upon request)
Packaging:
310 ml cartridges (12 per box)
600 ml sausages (12 per box)



ETA 14/0449



APPROVAL N° CF5326



FS709

HP Intumescent Sealant



A high pressure exerting, graphite intumescent mastic which when exposed to fire expands

Description

FS709 HP is designed to close off gaps and penetrations in compartment walls and floors, to provide up to 4 hours fire resistance. FS709 can be used on flexible walls & rigid walls (100mm or wider), rigid floors (150mm or wider), and also with FB750 Intubatt Coated Batt. This product has been formulated to close off combustible pipe penetrations in the event of a fire, negating the need for pipe closers or wrap systems. FS709 has been tested in a variety of service penetrations.

Features & Benefits

- Up to 4 hours fire resistance- tested to EN 1366-3 and EN 13-66-4
- Versatile and easy to apply
- Tested with combustible pipes up to 12mm, insulated non-combustible pipes up to 160mm, cables, cable trays/ladders/baskets (up to 500mm), cable bundles (up to 100mm)
- Can be used in FB750 Intubatt Coated Batt
- Tested in openings up to 600 x 600 mm
- Tested for use in linear gaps up to 25 mm

Specification

Colour
Anthracite

Packaging
310 ml cartridges (12 per box/25 per box)
600ml sausages (12 per box)



ETA 17/0388

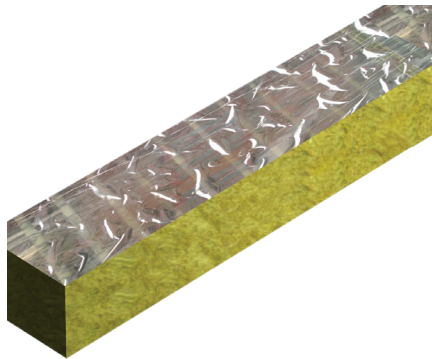


APPROVAL N° CF5609





Linear Movement & Specialist Building Gap Seals



FJ240 Spanatherm

up to
120
mins

Provides a fire-tight barrier for trunking boxes where frequent changes to cabling may be required

Description

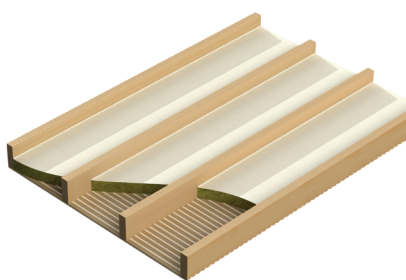
FJ240 Spanatherm is a strong pre-engineered rock fibre movement-joint fire seal, vertical fibre orientation, that allows significant movement accommodation at the same time as providing fire integrity, insulation and an effective smoke seal. FJ240 is a dense rock mineral fibre board Class A1 core with a BC0 aluminium foil applied to two faces. This provides a vapour barrier and a smoke seal when correctly sealed.

Features & Benefits

- Up to 2 hours integrity and 90 minutes insulation - Tested to BS 746 20-22
- Dry fit system
- Easy to install and can be installed prior to the application of the cladding system
- Vapour, smoke and acoustic seal

Available Sizes

1200 x 600 x 100mm thick slabs.
Supplied individually (or in pallet quantities)



FB770

Intudeck - Timber Floor Upgrade

up to
90
mins

Ideal where ceilings cannot be disturbed or where lower floor occupancy does not allow fire upgrade

Description

FB770 Intudeck is a rock mineral fibre board coated on one side with a smoke and fire resistant sealant. Light weight and quick to install, FB770 can be cut to suit on site and fitted using compression and FS702 Intumastic bonding between joists. Ideal where decorative ceilings cannot be disturbed or accessed due to lower floor occupancy. FB770 may be used to upgrade the compartment capability to 90 minutes fire Integrity and Insulation (EI 90) whilst maintaining the load capability of the floor.

Features & Benefits

- Tested to BS EN1365-2 (loaded floors) and to BS 476 Pts 20-22 (non-loaded floors) : up to EI 90
- Simple installation method
- Does not disturb ceilings or damage ornate coving
- 40 dB acoustic performance

Available Sizes

600mm x 1200mm x 70mm
Supplied individually in clearly identifiable packaging (or in pallet quantities)
Double coated option available

Linear Movement & Specialist Building Gap Seals



FF197

Fire Rated PU Construction Foam



A moisture-curing foam that can provide up to 4 hours fire integrity to openings in masonry construction

Description

FF197 is a modified, single component, fire rated polyurethane foam. Used to seal door frames, window frames and linear gaps throughout the fire rated areas of a building.

Features & Benefits

- Tested to BS EN 1634-1 (fire door) : FD60 performance achieved
- Tested to BS EN 1366-4 (linear gaps): up to 4 hours fire resistance
- Cures to form a semi-rigid foam that is able to accommodate some degree of movement of the joint
- Acts as an effective fire seal for up to 4 hours (BS EN 1366-4) when used with Intumastic (FS702) intumescent acrylic or Intusil (FS703) silicone sealant

Specification

Supplied in 750 ml aerosol containers (12 per box)
Colour: Pink



FI200

Soffit Liner



Cost effective solution for insulating concrete soffits

Description

FI200 Soffit Liner is a specially formulated high density rock mineral fibre slab laminated to a 6 mm, impact resistant, cement particle board that provides an aesthetically pleasing liner to concrete soffits. A cost effective solution for insulating concrete soffits, providing both a robust & an aesthetic pleasing finish. It performs exceptionally well thermally and acoustically but, above all, provides a fire safe solution to building requirements.

Features & Benefits

- Tested to BS 476 Pt 6/7 Class 1 and BS 3533 insulation. The mineral fibre slab used meets Euroclass A1 to BS EN ISO 13501-1
- Tested to BS 476 Pt 22 for fire upgrade up to 120 minutes (protection of the lowest rebar within the floor slab, measured to not reach critical failure temperature)
- Durable and non-hydroscopic
- Easy to handle

Available Sizes

1200 x 600mm slabs

Available thicknesses:
136mm, 166mm, 191mm, 226mm
(thickness required is related to the U-value specified)



FJ220

Intubatt 3 Cavity Barrier



A strong, fast-fit flexible fire seal for curtain wall, slab edge and vertical cladding applications

Description

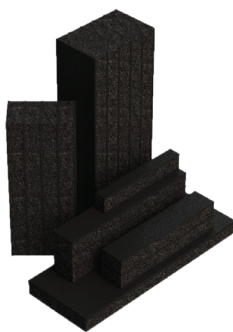
FB770 Intudeck is a rock mineral fibre board coated on one side with a smoke and fire resistant sealant. Light weight and quick to install, FB770 can be cut to suit on site and fitted using compression and FS702 Intumastic bonding between joists. Ideal where decorative ceilings cannot be disturbed or accessed due to lower floor occupancy. FB770 may be used to upgrade the compartment capability to 90 minutes fire Integrity and Insulation (EI 90) whilst maintaining the load capability of the floor.

Features & Benefits

- Tested to BS EN 1365-2 (loaded floors) and to BS 476 Pts 20-22 (non-loaded floors) : up to EI 90
- Simple installation method
- Does not disturb ceilings or damage ornate coving
- 42 dB acoustic performance
- Optifire™ unique traceability identifier

Available Sizes

600mm x 1200mm x 70mm
Supplied individually in clearly identifiable packaging



FJ400

Intuspan Intumescent Joint Filler



Joint filler providing a high level of movement suitable for gaps up to 100mm

Description

FJ400 Intuspan is an extremely compressable, foam based, joint filler. The product is black in colour, and consists of foam layers between high expansion intumescent layers. It provides a high level of physical movement, and can offer up to 2 hours integrity and insulation, with no adhesive required in most situations.

FJ400 is used to reinstate the performance of fire compartment lines, both walls and floors, where construction joints require a physical movement seal and a specific fire rating.

Features & Benefits

- Up to 2 hours fire performance- Tested to BS EN 1366-4 and BS 476 Pt 22
- Ideal for high vibration areas, such as elevator shaft interfaces
- Easy to install by hand
- Suits vertical & horizontal joints, and head of walls.

Available Sizes

Colour: Black
Available in a range of sizes- contact technical for more information
All available in individual units

Linear Movement & Specialist Building Gap Seals



FV060

Ventilated Facade Cavity Closer



For use within rainscreen cladding systems to maintain compartment lines to the exterior of the building envelope

Description

FV060 is a graphite impregnated rubber-based product, encapsulated within a polythene carrier. Both the encasement and the inner product are waterproof and UV resistant. The product remains dormant unless exposed to a fire situation. FV060 is capable of closing a ventilated cavity air gap of varying sizes within its specified capabilities. It is lightweight and requires no maintenance when installed to our instructions and recommendations.

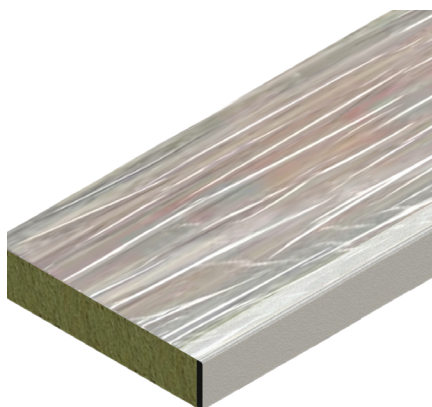
Features & Benefits

- Up to 60 minutes fire resistance - Tested to BS EN 1363-1, EOTA TR 31
- Ultra-slim design for continuous maximum air flow
- Weatherproof and UV resistant
- Lightweight and durable
- Can be installed prior to the cladding installation

Available Sizes

Size: 1200 x 65 x 8mm (50mm cavity)
- localised cavity reduction of 8mm
Size: 1200 x 65 x 4mm (29mm cavity)
- localised cavity reduction of 4mm

Colour: red/white



FV100

Ventilated Facade Large Cavity Closer



For use within rainscreen cladding systems to maintain compartment lines to the exterior of the building envelope

Description

FV100 comprises of a rock mineral fibre carrier and a high pressure graphite manipulated intumescent composite. This is retained within a polymeric, branded (for product identification), water proof adhesive encapsulant. The product remains dormant unless exposed to fire. FV100 should be used within rainscreen cladding systems to maintain compartment lines to the exterior of the building envelope.

Features & Benefits

- Tested at Exova BM Trada to BS EN 1366-4
Maximum free air space 50 mm
- Moisture proof covering, ensures easy installation in awkward situations

Available Sizes

Size: 1200 mm length x 60 mm depth
Suitable for 25mm or 50mm air gaps
Colour: Silver, black, red

Large Cavity Barriers



FD090 Fire and Smoke Curtain



Provides a 90 minute fire and smoke barrier in roof voids and large volume areas

Description

FD090 is a lightweight, flexible fire curtain which provides a barrier to smoke and flames. It consists of a specially coated glass fabric material. This is suspended between perimeter fixings and staple jointed for maximum effectiveness. FD090 is suitable for up to 90 minutes fire integrity.

Features & Benefits

- Tested to BS 476 Pt 20/22, BS 7346 Pt 3, smoke curtain and BS 476 Pt 7: 1987. Class 1 spread of flame
- Subdividing ceiling
- Subdividing roof
- Partitioning the void below a raised floor
- Temporary protection around scaffolding

Specification

Colour: Grey

Size: 1.3m x 50m roll



Testing & Certification

Able to assist with a comprehensive selection of passive fire protection products, Nullifire's product portfolio gives architects, specifiers, and contractors the ability to achieve fire protection requirements within any building structure.

Working closely with our in-house technical team, 3rd party accredited installers can deliver the best possible and most cost-effective fire protection solution, without compromising on quality or safety.

As the soul manufacturer to offer both intumescent coatings and passive fire protection products, we are uniquely positioned to offer a full package to suit all project requirements. CPG UK's passive fire protection products, in combination with technical support and expert advice, gives all parties peace of mind and assurance of local building code compliance.

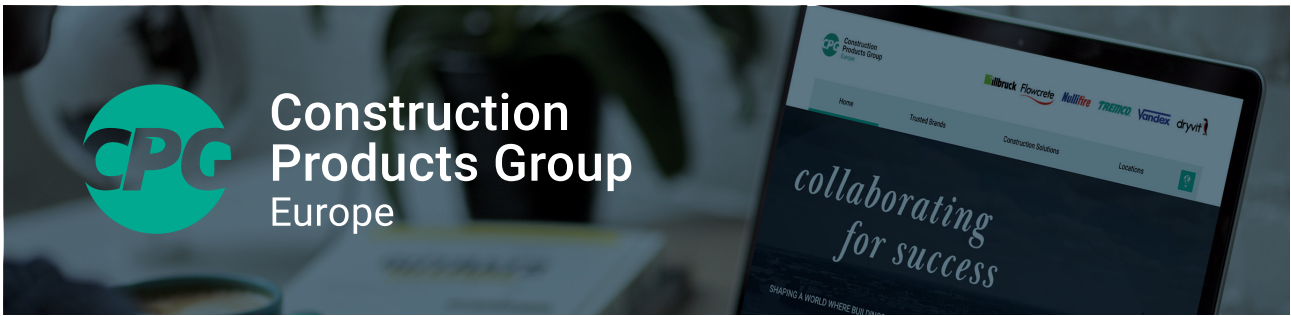
Our passive fire protection products undergo initial validation assessments at our in-house facilities prior to undergoing rigorous independent third party testing with leading UKAS test houses, resulting in the following accreditations:

- BS476 Pt20, 21, 22, 25
- BSEN 1366-3/4
- EN13501-2:2007
- ETAG 026-2
- CE Marking
- Certifire
- UL EU Classification

CPG UK is an active participant in BSI standards, CEN working groups and the ASFP.



CPG UK products are manufactured to rigid standards of quality. Any product which has been applied (a) in accordance with CPG UK written instructions and (b) in any application recommended by CPG UK, but which is proved to be defective, will be replaced free of charge. No liability can be accepted for the information provided in this leaflet although it is published in good faith and believed to be correct. CPG UK Limited reserves the right to alter product specifications without prior notice, in line with Company policy of continuous development and improvement.



CPG Europe manufactures high performance building materials in order to solve the complex challenges faced by today’s construction industry. With over 1,400 employees across Europe, we are committed to shaping a world where buildings and structures save energy, last longer and exceed sustainability benchmarks.

Delivering World-Class Construction Product Solutions.

The product brands housed within CPG Europe cover a wide array of different construction needs and provide a wealth of complex services, support and systems that are rarely found together under one roof.



Sealing, bonding & insulation

Window Insulation, Façade Construction, Exterior Insulation & EIFS, Structural & Inplant Glazing



Passive fire protection

Intumescent Coatings, Fire Stopping



Flooring

Seamless Resin Flooring, Subfloor Preparation, Car Parking Structures



Waterproofing

Civil Engineering, Potable & Waste Water Industry, Balconies, Terraces, Basements & Foundations



Roofing

Liquid Applied Systems, Felt Systems, Vegetated Roofing

Europe’s leading construction products brands...





Tremco CPG UK
Coupland Road, Hindley Green
Wigan WN2 4HT, United Kingdom

T. +44 (0)1942 251400
F. +44 (0)1942 251400
firesales@cpg-europe.com
www.nullifire.com